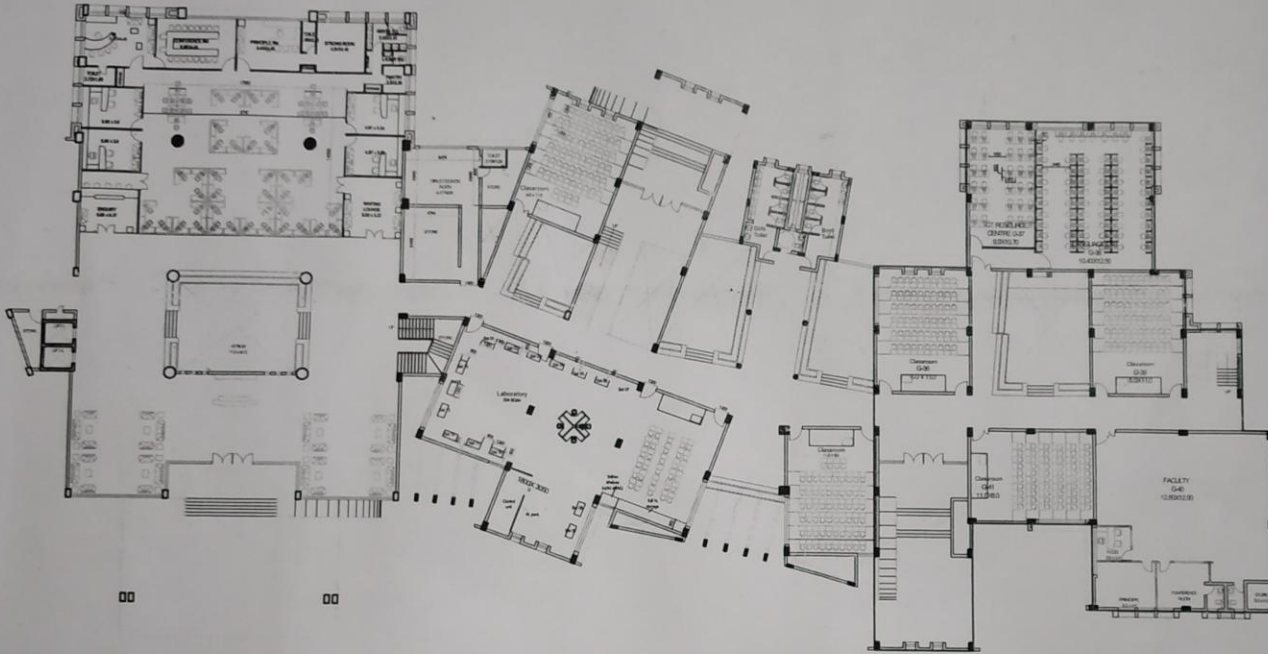


Infrastructure



GROUND FLOOR PLAN

साविद
ग्राम पंचायत नरदहा
वि.ख.आरंग, जि. रावपुर (छ.ग.)

पंचायत नरदहा
सरपंच
ग्राम पंचायत नरदहा
रा.प.ड. आरंग, जि. रावपुर (छ.ग.)

Sub Divisional Officer
P.W.D. Sub Division No-3
Raipur, C.G.

Architect
Prashant Agrawal
CA/2001/27162

For, SBA Education Society
Secretary

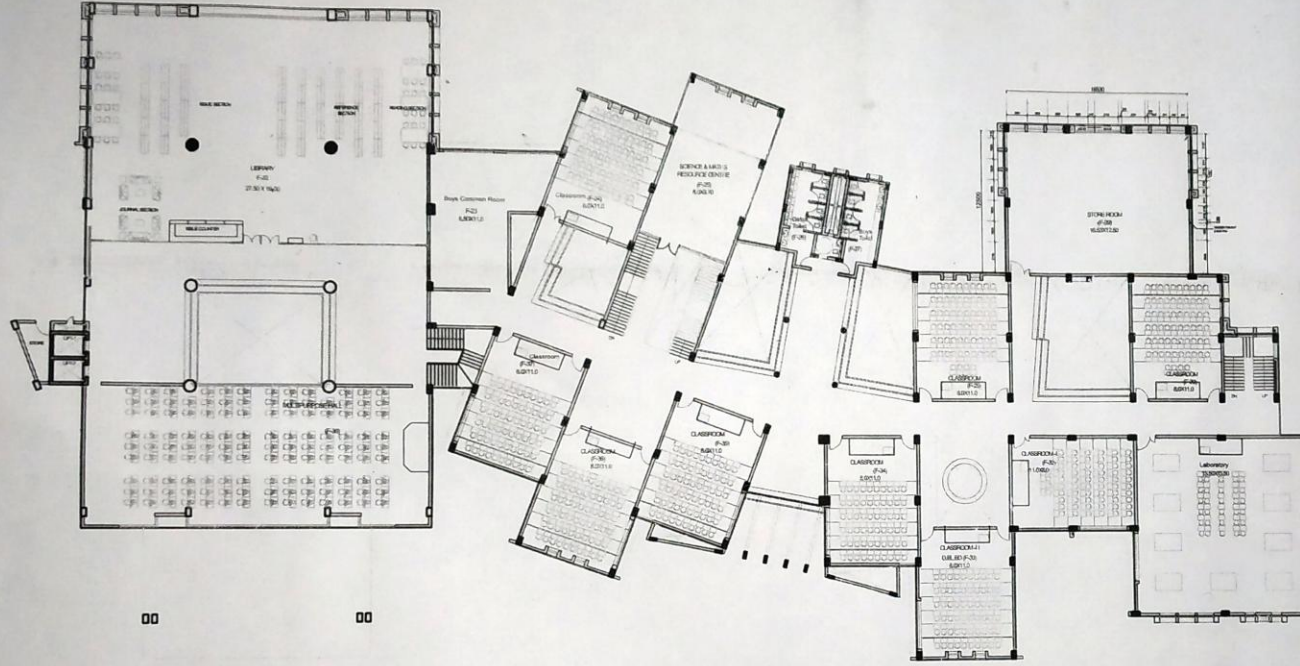
S.No.	Particular	Area M ²
1	Director Room	28.4775
2	Conference Room	32.705
3	Principal Room	25.2525
4	Toilet	2.225
5	Strong Room	20.868
6	Gents Toilet	14.002
7	Pantry	6.76
8	Toilet	6.9776
9	Room	38.36
10	Room	35.577
11	Enquiry	28.1185
12	Waiting Room	28.1185
13	Girls Common Room	32.9618
14	Store	32.9334
15	Classroom	75.8
16	Laboratory	336
17	Classroom	90
18	G-36 (Classroom)	90
19	G-41 (Classroom)	90
20	G-39 (Classroom)	90
21	G-37 (Classroom)	66.2
22	G-38 (Classroom)	132.375
23	G-40 (Classroom)	157.25
24	Movement Area (Admin)	255.475
25	HOD	24
26	Meeting Room	24
27	Department Store	24
28	HOD	10
29	Classroom	90
30	Atrium	90.65
31	Laboratory	6.48
32	Toilet	14.45
33	Movement Area	332.55
	Total	2322.57

Kruti School of Business Management
at Khasra no. 1560, P.H.No. 80/1, Gram Nardaha, Teh: Arang, Raipur, Chhattisgarh, 493111

CONSULTING ARCHITECT
CREATIVE ARCHITECTS
ARCHITECTS AND INTERIOR DESIGNERS
B-41, 1ST ESTATE,
10 KAMAROH, MID-WAN SAKHA ROAD,
RAIPUR-492007
0998666444, 09811423522



Infrastructure



S.No.	Particular	Area M ²
1	Library	523.595
2	Multipurpose Hall (F-38)	331
3	F-23	72.5
4	F-37	89
5	F-36	89
6	F-35	89
7	F-24	89
8	F-25	78.6
9	F-26	65
10	F-34	89
11	F-28	89
12	F-33	89
13	F-32	89
14	F-31	242.25
15	F-30	89
16	F-29	208.625
	Total	2322.57

FIRST FLOOR PLAN

[Signature]
 सचिव
 ग्राम पंचायत नरदहा
 वि. ख. आरंग, जि. रायपुर (छ.ग.)

[Signature]
 सरपंच
 ग्राम पंचायत नरदहा
 वि. ख. आरंग, जि. रायपुर (छ.ग.)

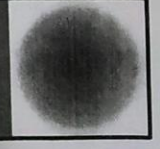
[Signature]
 Sub Divisional Officer
 P.W.D. Sub Division No -3
 Raipur (C.G.)

Architect
Prashant Agrawal
[Signature]
 CA/2001/27162

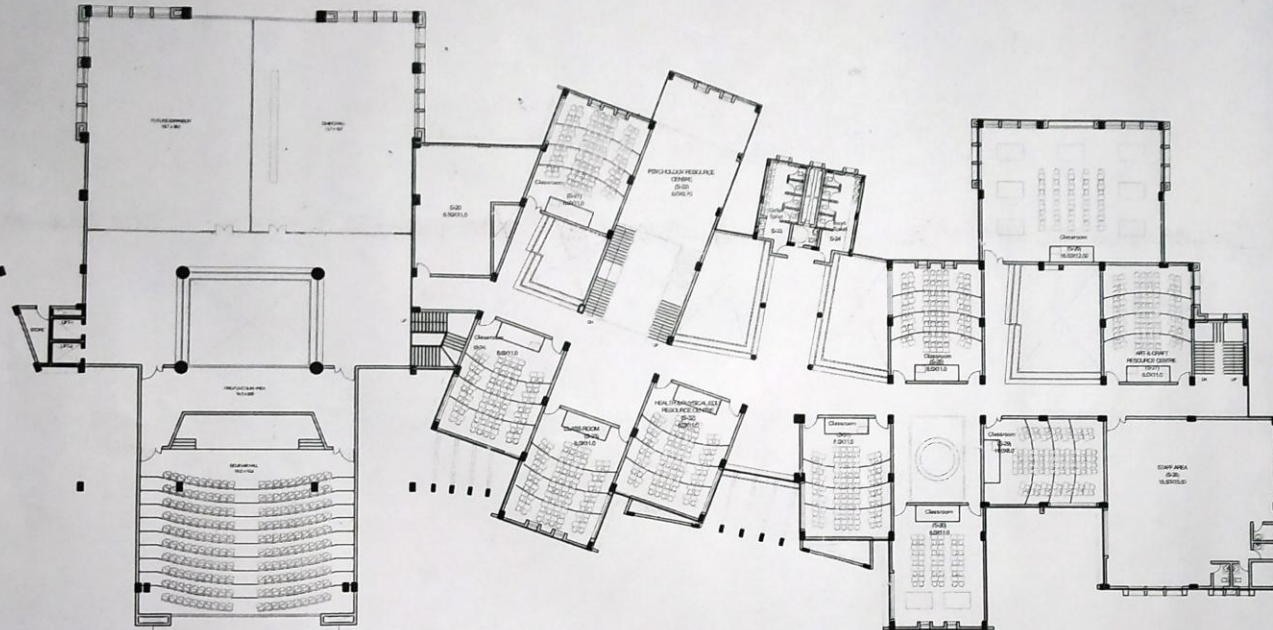
For, SBA Education Society
[Signature]
Secretary

Kruti School of Business Management
 at Khasra no. 1560, P.H.No. 80/1, Gram Nardaha, Teh: Arang, Raipur, Chhattisgarh, 493111

CONSULTING ARCHITECT
CREATIVE ARCHITECTS
 ARCHITECTS AND INTERIOR DESIGNERS
 B-41, VP ESTATE,
 KHANWARDH, VIDHAN SABH A ROAD,
 RAIPUR-492007
 08888066444, 09981422522



Infrastructure



S.No.	Particular	Area M ²
1	Seminar Hall	279
2	Pre Functional Area	71.1
3	Dining Hall	520.6
4	S-20	71.5
5	S-21	88
6	S-22	77.6
7	S-23	64
8	S-25	88
9	S-26	206.625
10	S-27	88
11	S-28	240.15
12	S-29	88
13	S-30	88
14	S-31	88
15	S-32	88
16	S-33	88
17	S-34	88
Total		2322.57

SECOND FLOOR PLAN

(Signature)
 सचिव
 ग्राम पंचायत नरदहा
 वि.ख.आरंग, जि. रायपुर (छ.ग.)

(Signature)
 सहायक
 ग्राम पंचायत नरदहा
 वि.ख.आरंग, जि. रायपुर (छ.ग.)

(Signature)
 Sub Divisional Officer
 P.W.D. Sub Division No -3
 Raipur (C.G.)

Architect
Prashant Agrawal
(Signature)
 CA/2001/27162

For, SBA Education Society
(Signature)
 Secretary

Kruti School of Business Management
 at Khasra no. 1560, P.H.No. 80/1, Gram Nardaha, Teh: Arang, Raipur, Chhattisgarh, 493111

CONSULTING ARCHITECT
CREATIVE ARCHITECTS
 ARCHITECTS AND INTERIOR DESIGNERS
 B-41, MP ESTATE,
 KHAJANDEI, MOHAN SARKHA ROAD,
 RAIPUR, 492007
 0886865444, 09861422522

